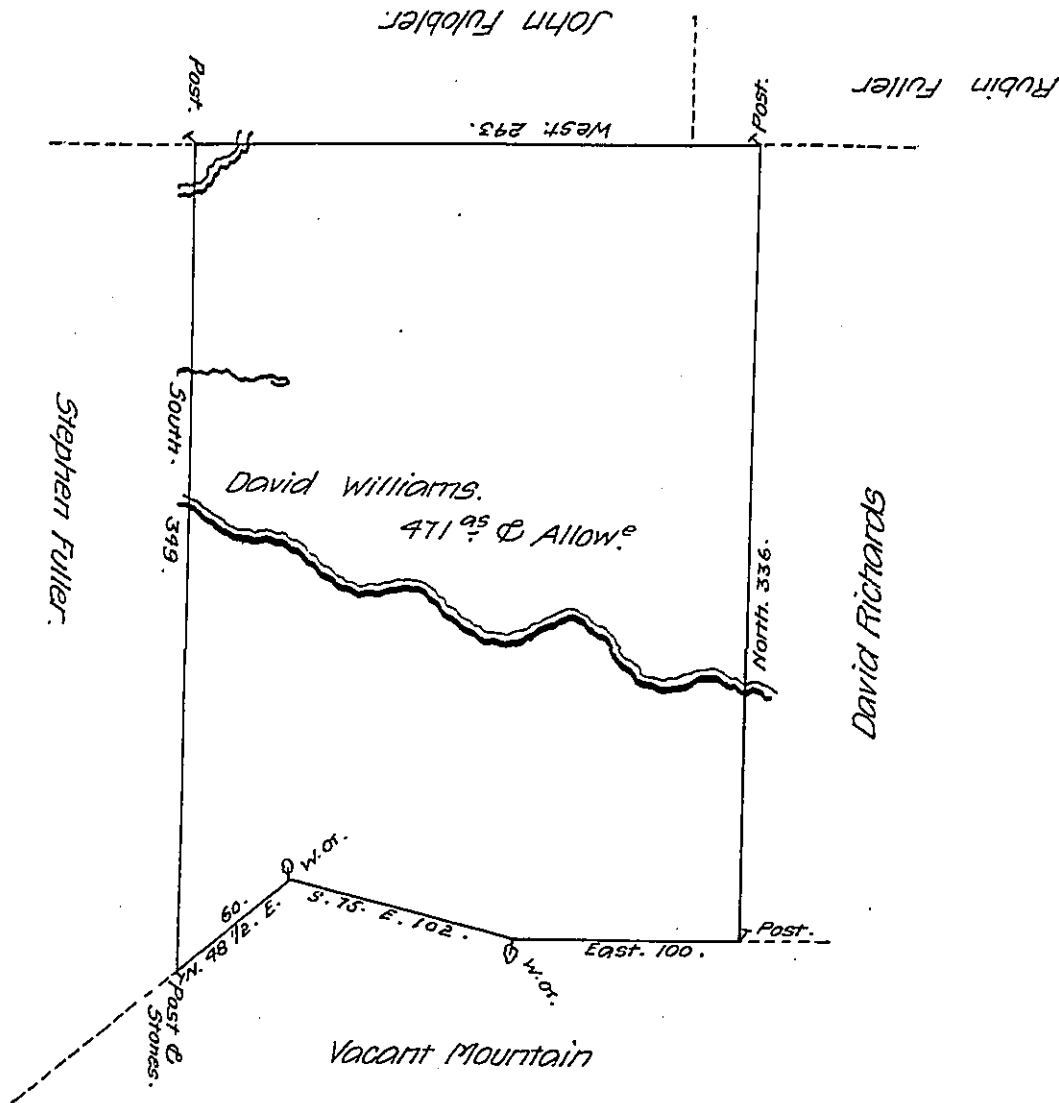


K-86



Draft of a tract of land called _____ Situate on a Spring Brook a Branch of Big Wappalopen Creek about 1 1/2 Miles west of a b Harrier Path in the County of Luzerne Containing four Hundred and Seventy one acres & allowance Surveyed for David Williams the 23^d day of May 1793 in pursuance of a Warrant dated the 13th day of August 1792.

by W^m Gray D.S.

Daniel Brodhead Esq.

Surv. Gen.

IN TESTIMONY that the above is a copy of the original remaining on file in the Department of Internal Affairs of Pennsylvania, made conformably to an Act of Assembly approved the 16th day of February 1833, I have hereunto set my hand and caused the Seal of said Department to be affixed at Harrisburg, this twentieth day of September 1907.

Henry Hoover
Secretary of Internal Affairs.